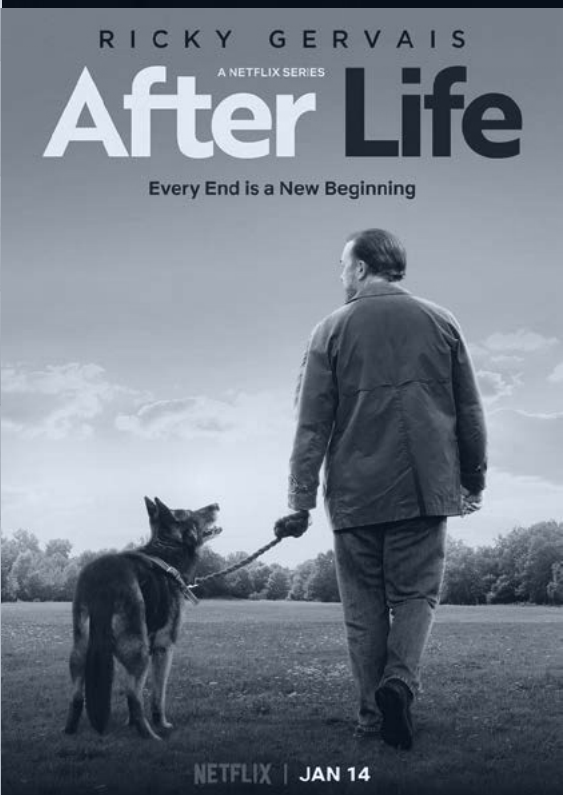
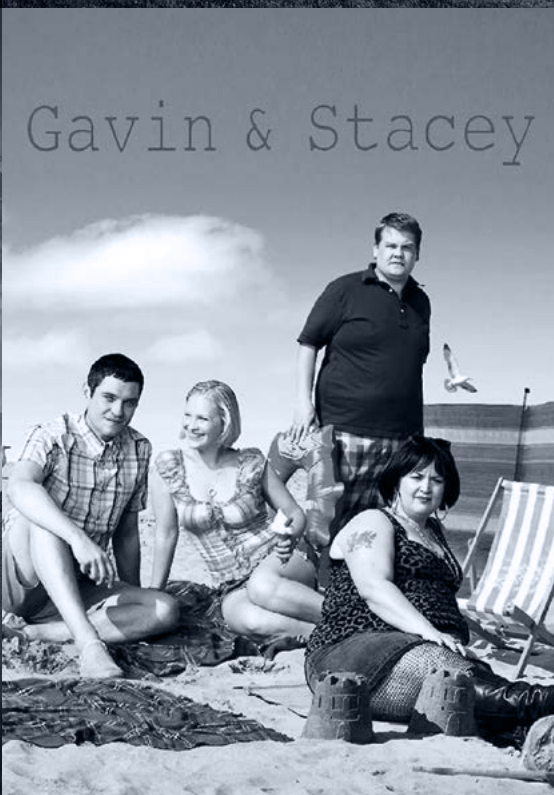




FILM & TV

"The Outfit" courtesy of Universal Pictures



LEAVE THE HOW TO US

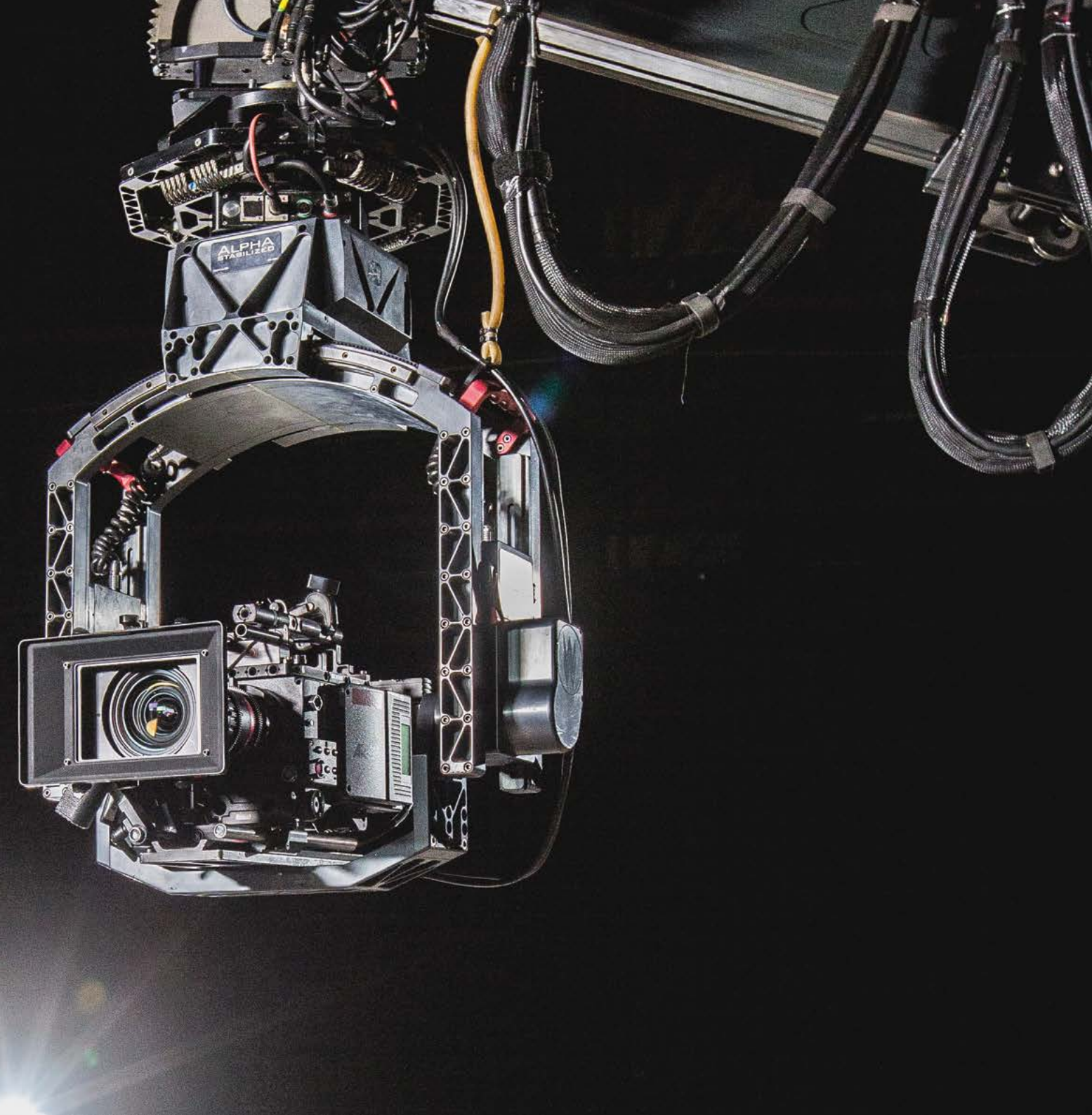
5 unique reasons that enable us to make that promise...

- 1 You can trust us – we're your dedicated partner, providing **unrivalled scope and scale** within the TV and film industry.
- 2 You can access our **specialist teams who have deep expertise and knowhow.**
- 3 You will benefit from our managed services, from defining your production needs right through to design and delivery, tailored to your production. We call this **'360 Solutions'.**
- 4 We are leading from the front for a sustainable future. We are the UK's largest **zero and low carbon equipment** rental provider. We are doing right by our customers, our communities, our people and our planet.
- 5 Our vision is to 'own the future of rental' and we're well into our journey with **cutting edge solutions** in data management and visualisation, connected sites, robotics and automation.

EVERYTHING YOU NEED IN ONE TAKE

We are Sunbelt Rentals, specialist suppliers of professional end-to-end solutions for content creators in the Film and TV production industry.

As your go-to production partner, we provide the most comprehensive and technologically advanced rental inventory to producers of all forms of content. From prep through to wrap. From custom-built studios, location support and powered access equipment through to cameras, lenses, lighting, grip, power and temporary infrastructure solutions.





OUR STORY

We are the world's leading rental equipment company with vast experience of bringing the biggest stages to life, from the G7 Conference, Queens Jubilee, Queens Funeral and Kings Coronation to the world-famous Glastonbury Festival.

Now, we have acquired five of the biggest names in media production.

Bringing together five incredible brands and over 20,000 rental experts in more than 1,250 international locations, working as one for you. Providing all the expertise, equipment and services you need to deliver your production smoothly and cost-effectively.

Think of us as your extended production team. An expert crew to go above and beyond. Skilled technicians, in-house production experts and best-in-class maintenance teams who will do whatever it takes.

movietech®

MOVIETECH

Market leading creative suppliers of camera, lens and grip equipment for the film, television and commercials production industry.

ALPHAGRIP

ALPHA GRIP

Providing grip equipment which range from telescopic, modular camera cranes, stabilised and non-stabilised remote heads and specialist vehicles, from multiple locations throughout the UK.

SUNBELT®
RENTALS

FILM & TV

pkelighting

PKE LIGHTING

One of the largest film, television and photographic lighting rental companies in the UK.

MAS MEDIA ACCESS SOLUTIONS

MEDIA ACCESS SOLUTIONS

Experts in media powered access. From scissor lifts and boom lifts to forklifts, spider lifts and truck mounts.

WILLIAM F. WHITE INTERNATIONAL INC.

WILLIAM F. WHITE INTERNATIONAL INC.

Founded in 1963, William F. White International Inc. is an iconic provider of production equipment and studios in the film and TV industry.



Photo courtesy of BBC/HBO "His Dark Materials"

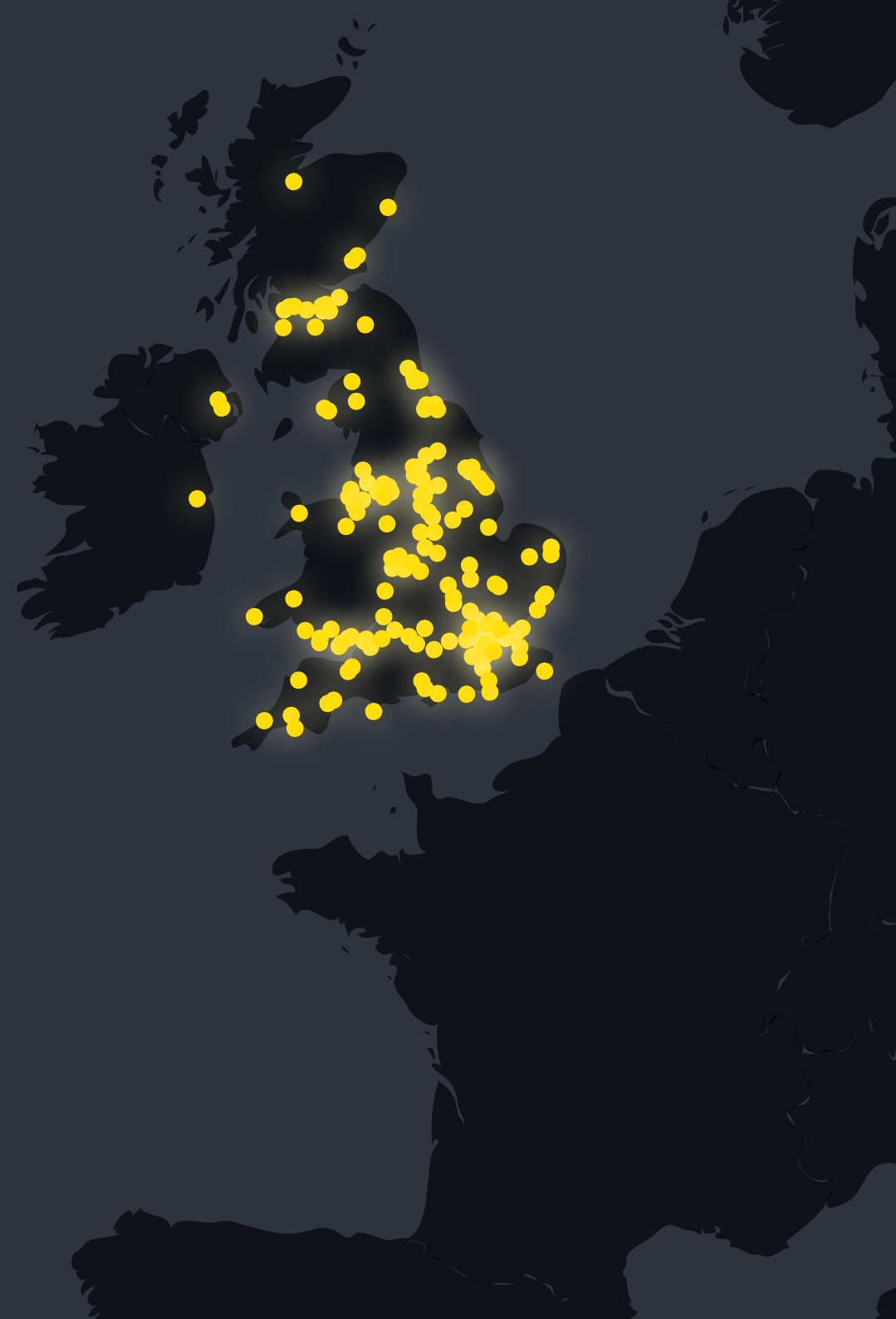
BY YOUR SIDE

We provide more than just rentals.

We deliver production solutions and world-class customer experience. So, whatever your challenge, no matter how big, you can **LEAVE THE 'HOW' TO US.**

- Expertise in the film and TV industry
- Over 1.5 million items of equipment
- Nearly 200 depots across the UK and Ireland
- Prompt delivery to your set
- 360 Solutions – 24/7, 365 dedicated support
- Sustainable solutions across our portfolio to lower your carbon footprint
- 4,000-strong UK team behind your crew

REIMAGINING THE FUTURE OF RENTAL



Fleet Value
£1025m

UK Turnover 2023
£719m

Expert Employees
4,000

UK Locations
184

We are part of the FTSE100 Ashtead Group plc, the global leader in equipment rental.

OUR VISION

We have one vision – to own the future of rental

We set the standard. We keep evolving. No-one matches the safety, innovation and solutions we deliver for you.

OUR MISSION

Our mission - we will deliver a world-class rental experience

Creating exceptional customer experiences with world-class satisfaction levels through our team of empowered, engaged and motivated experts.

OUR VALUES

Our values sum up the way we think, the way we act and what we do

Our values were created together, by our people. They are part of our DNA. They are:

Safe: Safety is our number one priority. If it can't be done safely, it won't be done. For our people and for you, nothing matters more.

Responsible: We do the right thing for our people, for you, for our communities and for our planet.

Innovative: We're always making things better. Not just the equipment we supply, but the services we deliver and the way that we do our jobs.

Action: No standing back. No standing still. When something needs doing, we step up and make it happen.

Expert: Our expertise makes us different. We deliver specialist solutions for you, every time.

Teamwork: We trust each other to build a business to be proud of. Together, we are unstoppable.



OUR COMMITMENT TO OUR PLANET

Our Planet is our plan for a sustainable future. Our commitment to providing better all-round solutions that do right by all.

We care passionately about sustainability through Our Planet, our plan for a sustainable future. This is helping us to safeguard the environment and generate social value for the communities in which we operate. And through this we are committed to creating greener and safer productions while generating social value for the next generation:

- By investing in new zero carbon technology and innovating cleaner, greener solutions to reduce harmful emissions
- By investing in our own people in apprenticeships, skills training and opportunities for all
- By investing in our communities, supporting local people and projects and supporting employment programmes

Just as we demand operational excellence in everything we do, we will be uncompromising in helping shape the future for generations to come.



POWERING THE PRODUCTION OF TOMORROW

Global climate change is affecting how our industry operates now and in the future. We're committed to finding better ways to overcome environmental challenges.

EQUIPMENT

We are committed to working towards a zero-waste future, reusing materials and reducing packaging. We have a wide range of electric vehicles and plant, battery powered tools, and solar-powered cabins and welfare units. We are also proud to have one of the largest LED and solar lighting inventories in the industry.

ENERGY

We're committed to saving energy. By combining our low emission generators, battery storage units, energy management systems and biofuels, we can design a solution to meet your power needs which will reduce fuel costs and cut carbon. Today, our entire fleet of plant equipment, lighting and generators is compatible with fossil-free HVO fuel, proven to reduce emissions by up to 90%.





BRINGING VIRTUAL PRODUCTION TO LIFE

Through our partnership with Academy and Emmy award-winning visual effects partners we are committed to bringing Virtual Production to life.

We combine live action with cutting-edge, digitally created environments, rendered in real time on extended reality walls and ceilings, to deliver a production experience unlike any. This maximises creative control while minimising costs and the carbon footprint.



LIGHTS
CAMERA

GRIP

POWER

ACCESS

INFRASTRUCTURE

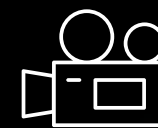
ACTION



SPECIALIST EXPERTISE
AND EQUIPMENT



Lighting



Cameras & lenses



Power



Battery storage



Package trucks
& vehicles



Motorized yokes
& aerial lifts



Structures, cabins
& welfare



Grip



Dollies



Plant & powered
access



Lighting towers



Survey Drones
& Scanners



E-bikes



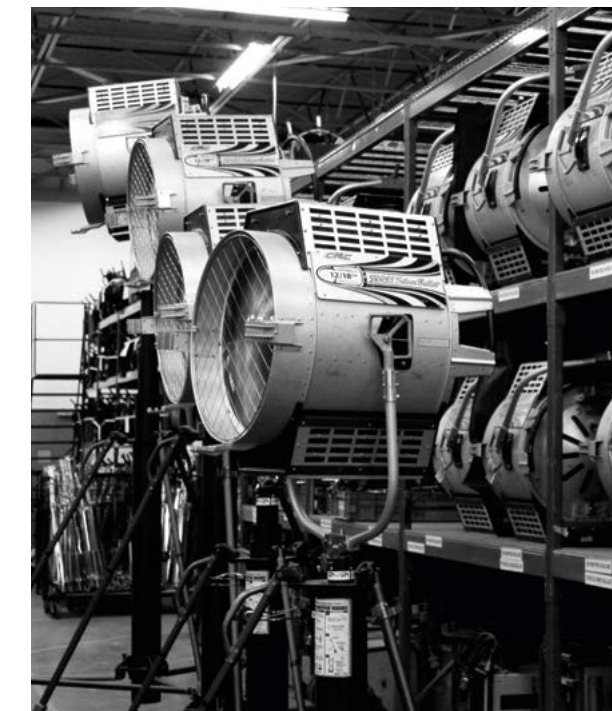
Location Access

CAMERAS AND LENSES

Our team is dedicated to sourcing the widest range of digital and film cameras, lenses and support equipment for every creative vision.

We can provide premium quality super 35 and large format cameras from manufacturers including SONY, ARRI and RED. Plus world-renowned lensing from Vantage/Hawk, Leica, Zeiss, Arri Signature, Cooke, Canon, Masterbuilt, Angenieux and Fujinon.

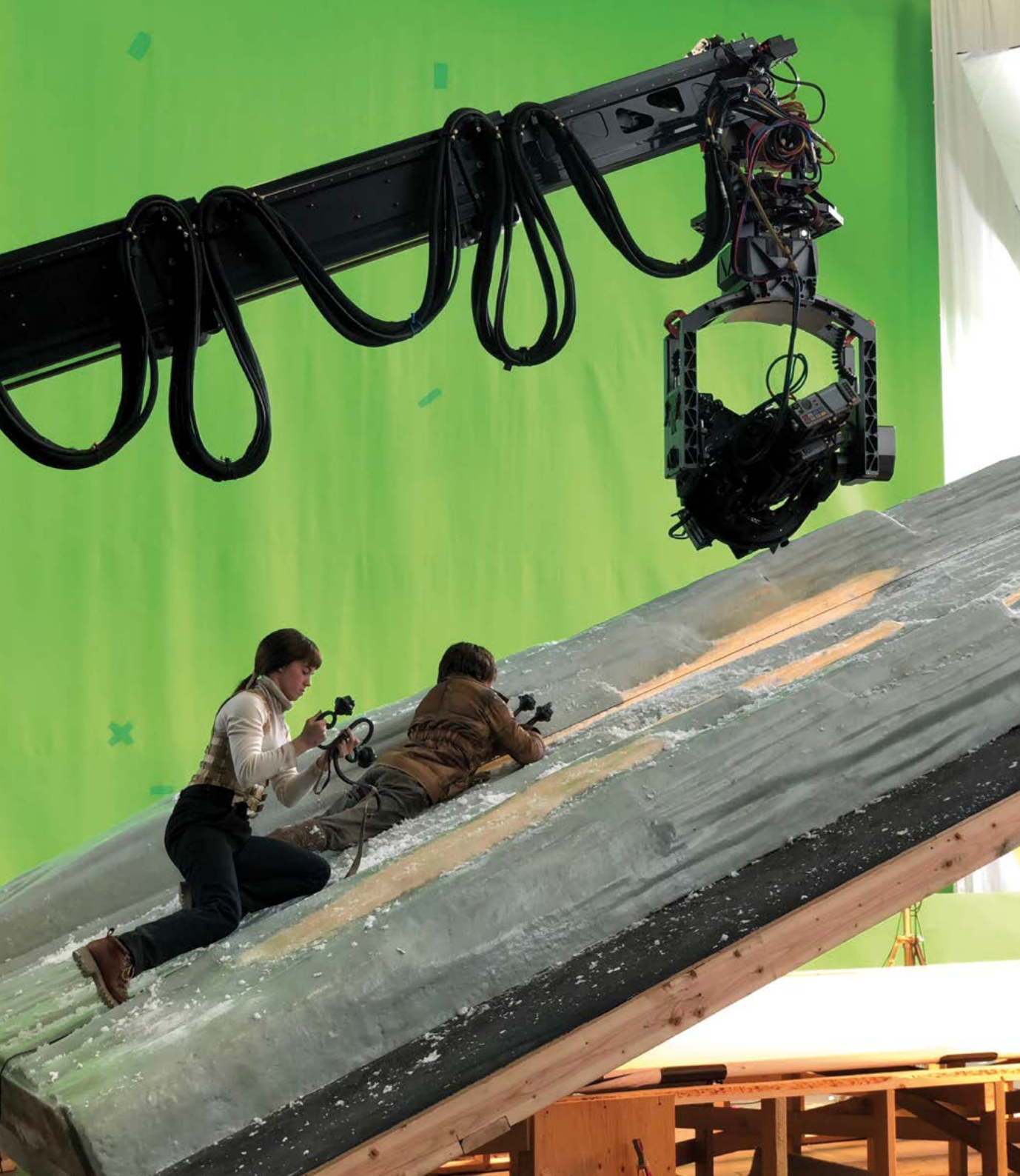
Our full inventory includes an extensive array of camera support equipment, while our team is always available to recommend custom-tailored solutions.



LIGHTING

When it comes to lighting, our solutions shine brightest.

The choice is wide from studio lighting kits to location lighting solutions, including HMI, incandescent and LEDs of every shape and size. Green screens and miles upon miles of cable. We supply stock from key manufacturers; Arri, Astera, Cream Source, Kino Flo, LiteGear, Aladdin, Nanlux, Lightbridge, Dedolight, DOP Choice and Grand MA.



GRIP, CRANES AND ROBOTICS

We go further to help you get the most memorable shots. From one of the largest ranges of grips and telescopic cranes, to jibs and remote heads.

We even supply the Super Techno 100R, the only one of its kind in the world. We specialise in anti-vibration systems, shock absorbers and dampers for all types of camera solutions. Anything that can move a camera platform – and move your audience.

SUSTAINABLE LOCATION LIGHTING

We have the UK's largest range of environmentally friendly tower lights including hybrid and fully solar powered units. Fully compliant for film and TV with a range of added safety features and telemetry. Proven to reduce fuel consumption, noise pollution and CO2 emissions on set, versus traditional diesel-powered tower lights.



CLIMATE CONTROL

Stay cool on set with our specialist climate control service. We provide portable cooling, heating, drying and humidifying equipment, as well as temporary chiller and boiler hire tailored for any space.





STAGE V GENERATORS

Stage V is the latest stage of engine emission legislation designed to reduce pollution from the use of off-road engines. At Sunbelt Rentals we've invested millions in Stage V compliant equipment from a range of leading manufacturers.

Our Stage V plant equipment can be used with HVO fuel to reduce emissions even further:

- Maximise efficiency - reduce fuel costs, emissions and noise
- Control the load - we can change a 100 kVA Stage IIIA generator to a Stage V 60 kVA and deploy an EMS system to control the load
- 50% reduction - operating overnight, at weekends, and turning off the generator results in a >50% reduction in run time
- £430 saving - average running cost saving of over £430 and 1,726kg of CO2 per week

BATTERY STORAGE UNITS

Our Battery Storage Units (BSUs) are designed to work alongside power sources such as fuel powered generators or a mains electricity supply to create a hybrid power solution.

The generator or mains supply will charge the battery while simultaneously supplying power to site. The BSU is able to detect when power loads are low, such as overnight, turning off the generator and transferring the load to the battery, providing silent power.

The two systems work together in harmony to ensure that when a higher demand is detected, the load transfers back to the main generator, allowing the battery bank to then recharge. Our BSUs are also fully loaded with telemetry so you can monitor savings and performance. This solution reduces fuel consumption and costs, providing periods of silent power, as well as reducing carbon emissions by an average of 50-80%.

Our Power team will configure your system to suit your exact requirements to ensure your site and power needs are met 24/7.



TEMPORARY STRUCTURES

We can supply multi-functional units that are suitable for all types of use on set. From fully furnished production offices to welfare units to containers, secure storage and portable toilets.



B-rated cabins

Our cabins are well insulated, meaning less energy is needed to heat them.

Modular units

Can be adapted for offices, canteens, drying rooms, toilets, showers and many other uses.

Static welfare units

Ranging from 20ft by 9ft to 25ft by 9ft these units can comfortably accommodate up to 12 people. Available in a standard and eco specification, they have anti-vandal features including steel double-locking doors and internally secured steel window shutters.



Mobile welfare units

Towable welfare units offer a lightweight and compact mobile alternative that meets HSE requirements and provide all your on-site needs in one small package.

Welfare vehicles

Our welfare vehicles provide a comfortable rest area for your crew with all-important heating, hand washing, eating, hot water and toilet facilities.

Portable loos

Our range of portable toilets are fully self-contained, completely private, light and well ventilated. We can also provide luxury solar hybrid toilets with a heated interior and top-rated environmental performance.

TOOL HIRE

We provide a huge range of battery and cordless hand tools with sustainable charging options for construction sets in studios and to support crews on location.

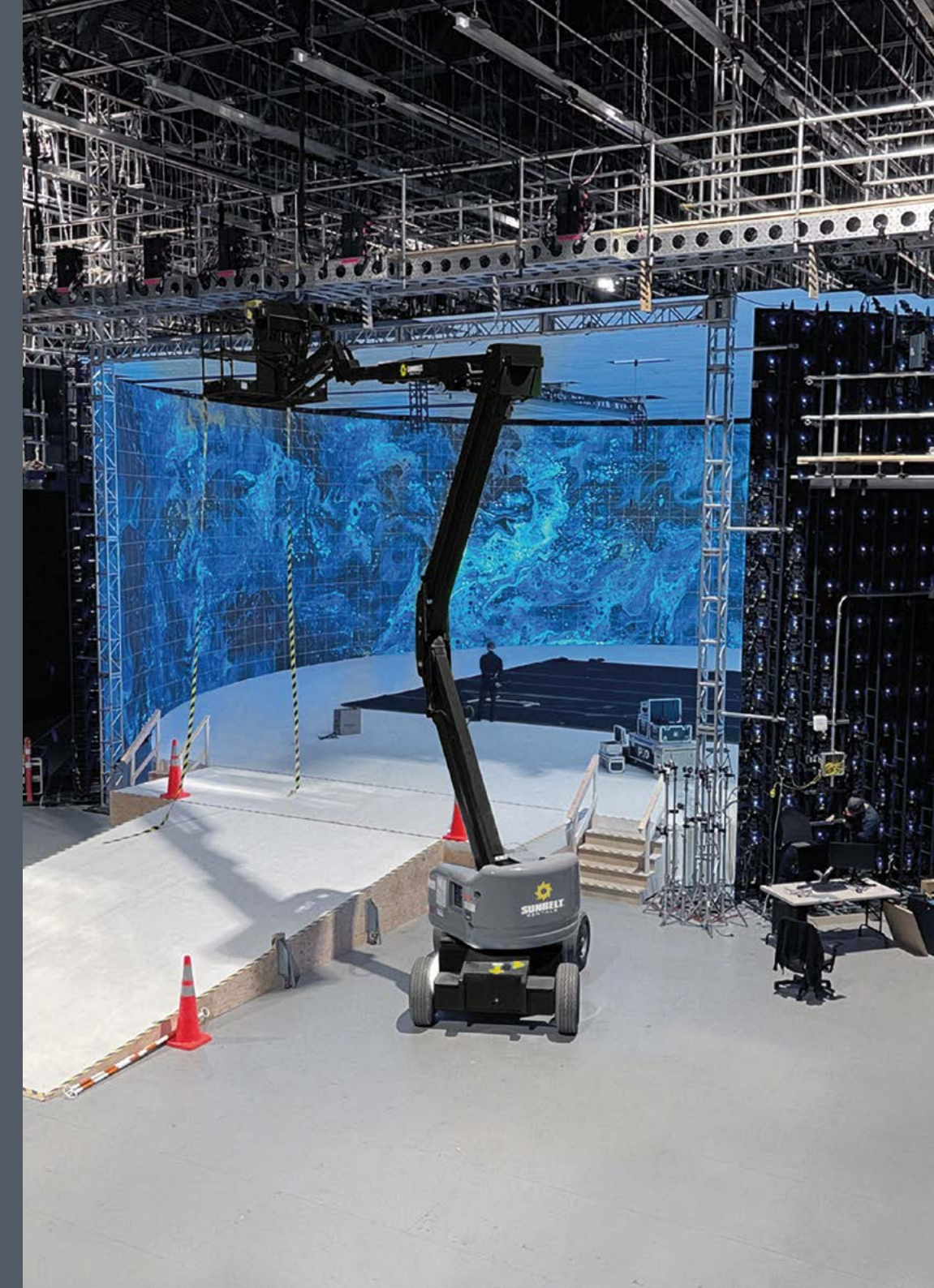
Everything from angle grinders, circular saws and cordless sanders to hammer drills, nail guns and wood planers. Manufactured by all the leading brands including Altrad Belle, Karcher, Makita, Stihl, JCB, Paslode, Hilti and Wacker Neuson.



PLANT & POWERED ACCESS

We have the largest fleet of eco plant and attachment equipment.

Our powered access machines, forklifts tracked booms, scissor and spider lifts and telehandlers make light work of every production task, whilst reducing the impact on the environment. Choose from the very latest, safest and most environmentally-friendly plant equipment from the world's leading manufacturers, including a huge range of electric solutions from brands such as JCB, Genie and Skyjack.



SAFETY AND COMMUNICATIONS

Safety on every set and production is paramount. Which is why we are pleased to provide a wide range of safety equipment including communications, confined-space access and working-at-height solutions.

We also supply fire extinguishers, radios, wi-fi units, harnesses, lanyards and defibrillators, featuring an integrated CPR advisor offering live feedback and instruction.

Through our team of experienced specialists, we also service and repair equipment and deliver a wide range of safety training courses. Plus, specialist services such as face-fit mask testing, on-site communications support and Safety and Rescue Teams.



AIR QUALITY, HEATERS & AIR CONDITIONING

We supply the most modern, clean and safe heating, drying and cooling equipment in the industry, all backed up with a high-quality service. Our comprehensive range of products are sourced from the leading manufacturers and include Heating Equipment, Air Conditioners and Cooling Equipment and Dryers and Dehumidifiers. With nationwide delivery you can efficiently access our range of reliable and fully maintained equipment.

ENVIRONMENTAL SAFETY

We can monitor your environmental impact through noise, vibration and particulates on site, reducing the risk to surrounding areas, as well as providing weather monitoring solutions to avoid risk to productions.

LOCATION ACCESS

We provide a range of location access to help you get on and around your production site.

Our environmentally sustainable temporary Trakway system and bridges can be laid onto most surfaces, enabling safe access for people, vehicles and plant machinery, while protecting the ground beneath it. When you've finished or want to move to a different part of the site, the track can simply be lifted up and re-installed.

Getting from A to B is just as simple and sustainable, thanks to our E-Bikes. Our Burlington Bikes are fitted with a 250watt motor and can travel 30 miles on a single charge, with a 3-4 hour charge time.

TRAFFIC MANAGEMENT

We supply everything you need to manage the flow or restriction of traffic on location.

We can provide a full equipment and management service from site survey, design and liaison with local authorities, right through to deployment, operation and recovery.

BARRIERS AND FENCING

For over 50 years, we've supplied a wide variety of fencing and barrier systems for a whole host of applications.

From 8km of super fortress security fence through to acoustic, anti-climb and pedestrian barriers, we can provide you with proven, safe solution-planning from delivery and installation to removal.

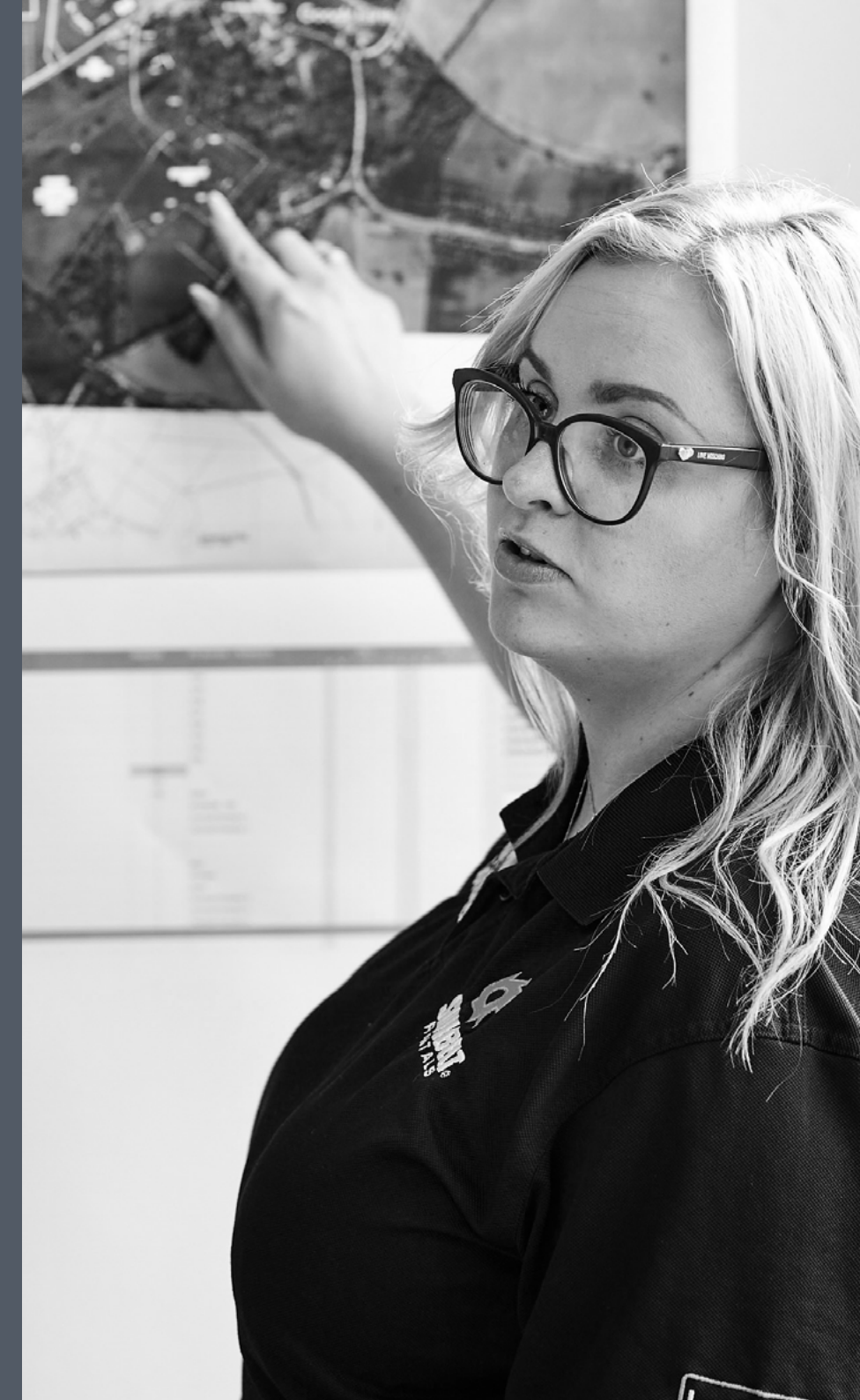


STARRING... 360 SOLUTIONS

We don't just hire equipment, we deliver end-to-end managed solutions, 24/7, 365, from our dedicated 360 Solutions team.

Our team of dedicated professionals, respond rapidly to your needs with a total solution when you need it. This means supplying turnkey support for your day-to-day projects, from full compound builds to bespoke solutions. Because we are one family of specialist teams, we can mobilise the exact team and equipment for your project whenever you need it, overseen by people you can trust. Providing one front door is what 360 Solutions is all about, taking the leg work and uncertainty out of your equipment rental needs.

- Big or small, planned or last minute response, we've got you covered
- A unique service, offered by no one else in the industry
- Delivered by a fully committed expert team, with a dedicated manager at your side
- Full solution design using the latest drone, LIDAR, CAD and BIM technology for 'right first time' confidence





PROVIDING RENTAL PRODUCTS AND MANAGED SOLUTIONS



Film & TV

From cameras, grip and lighting to backlot infrastructure



Powered Access

The combined height and reach of our equipment can transport you safely over 50,000 metres



Plant

The widest range of plant including the latest stage v and battery powered machines in the UK



Survey

Industry-leading supplier of land survey and precision measurement technologies



Lifting

Our solutions have been used on 7/10 of the tallest buildings in the UK



Energy

From fuel saving cleaner energy solutions to the latest stage v generators, we have a temporary power solution for every site.



Test & Monitoring

Europe's leading test equipment specialists since 1996



Plant Attachments

The sole UK distributor for several of the world's leading attachment manufacturers



Safety & Communications

Knowledgeable and experienced specialists in this field



Trakway

Award winning engineered access and ground protection solutions



Traffic Management

24/7 national coverage with operations covered by QEHSS accreditations



Barriers & Fencing

Crowd control and perimeter security solutions



Non-Mech

Essentials for every site; fencing, barriers, trenching, ground protection, vehicle and pedestrian control solutions



Training

Dedicated Health and Safety training to qualify our own people and our customer's people



Lighting

The UK's largest fleet of state-of-the-art tower lights, including a wide range of solar, hybrid and plug-in options.



Climate Control

Economical and efficient temperature control and HVAC solutions



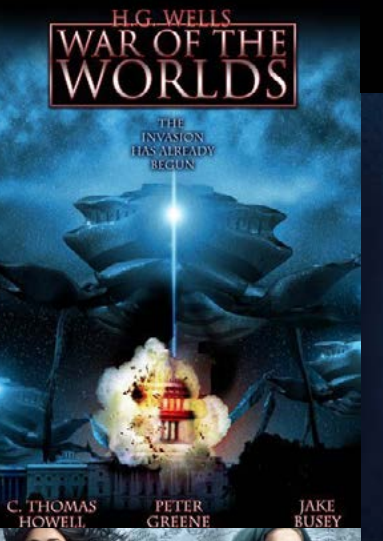
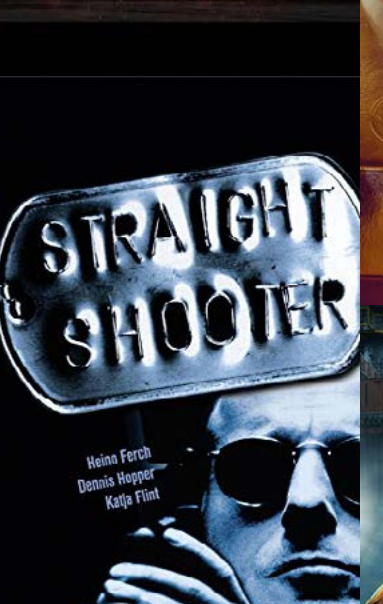
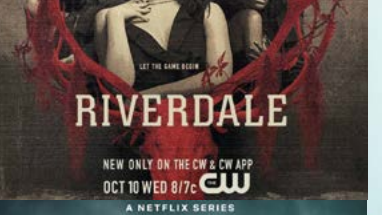
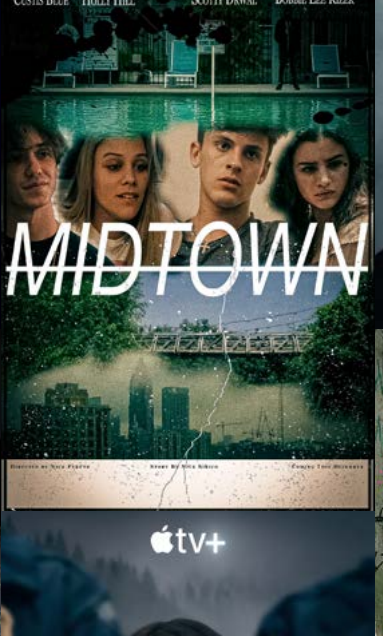
Welfare

24/7/365 call out facility covering 20,000 items on fleet



Tools

From battery powered hand tools to compressors, compactors and cleaning equipment we offer a wide range of tool hire that's local to you





filmandtv@sunbeltrentals.co.uk
0161 241 6185

Powered Access

0121 702 1642
locationhire@sunbeltrentals.co.uk

Cameras & Lenses

01753 650 007
camerainfo@sunbeltrentals.co.uk

Lighting

0161 511 8131
lightingsales@sunbeltrentals.co.uk

Grip

01932 212 650
gripbookings@sunbeltrentals.co.uk

